



Clearview
subdivision

Lot 155

2311 Lovie Lane

Lot: 155

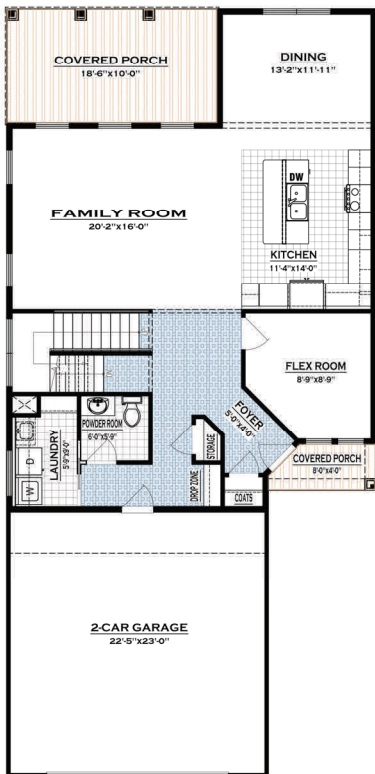
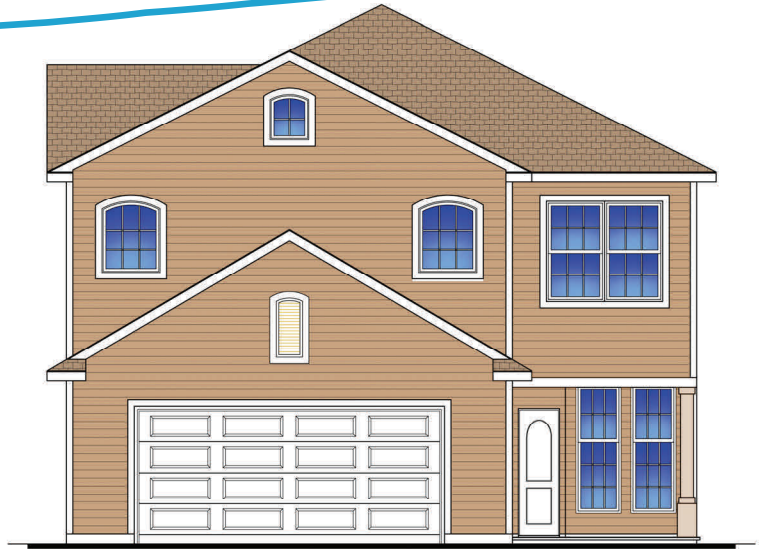
Model: Schmohr

Bedrooms: 4

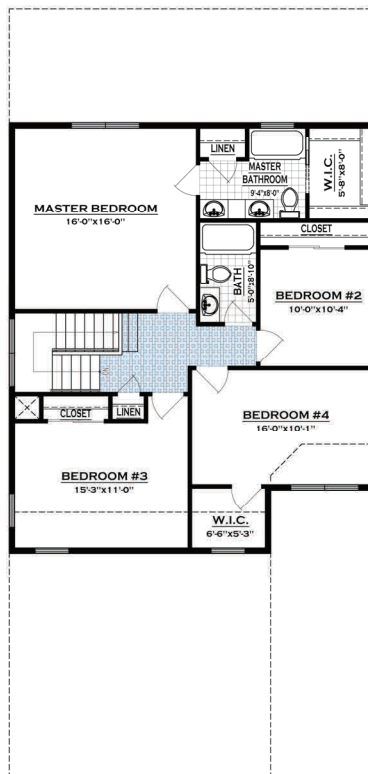
Bathrooms: 2.5

Area: 2,380 sqft

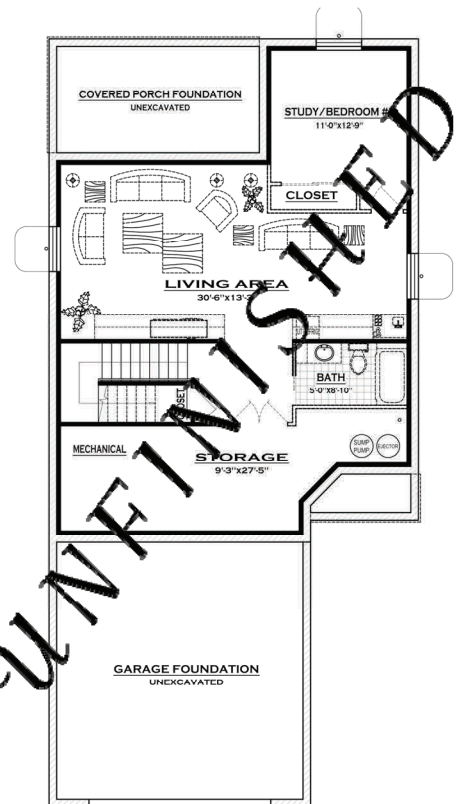
Parking: 2-Car Attached Garage



FIRST FLOOR PLAN
1,202 SQ. FT.



SECOND FLOOR PLAN
1,178 SQ. FT.



BASEMENT PLAN
1,202 SQ. FT.