



Clearview
subdivision

Lot 156

2309 Lovie Lane

Lot: 156

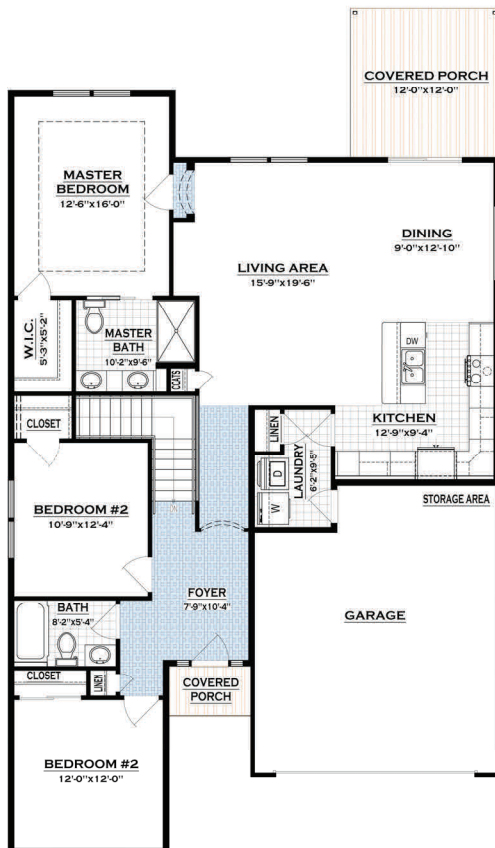
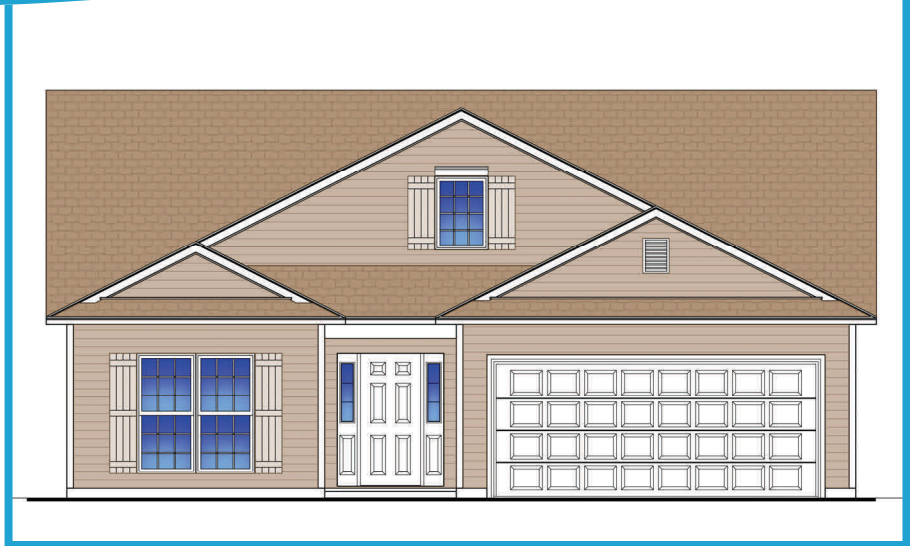
Model: Poplar 2—Original

Bedrooms: 3

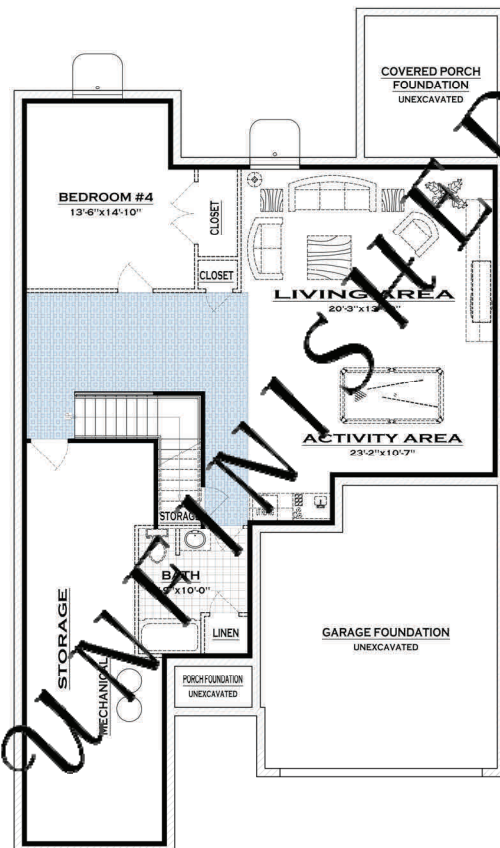
Bathrooms: 2

Area: 1,623 sqft

Parking: 2-Car Attached Garage



GROUND FLOOR PLAN
1,623 SQ. FT.



BASEMENT PLAN
1,490 SQ. FT.

UNFINISHED